



([www.VisKonz.de](http://www.VisKonz.de))

## QueryVision – an active query designer developed to create dynamic SQL´s, built with Dolphin Smalltalk and Seaside

There are two screencasts available:

[www.exoos.de/qv.exe](http://www.exoos.de/qv.exe)

Contains the building of two examples. (**please note, that this capturing-tool can´t display all of the AJAX-effects, such as drag&drop**)

[www.exoos.de/qv.avi](http://www.exoos.de/qv.avi)

**(just another example to show the drag&drop effect)**

The examples are based on the Northwind – Access Tutorial

### Management Summary

- QueryVision is a database-independent query designer which can be run as a Windows as well as a Web application
- is a robust solution which serves to create dynamic queries for final users. With this solution, also non-data-base-experts can perform **very frequent modifications within a short period of time, without changing the code**
- The user-friendly GUI permits the highly dynamic creation of Web-based entry forms via drag&drop like with a composition editor and the composing of several query components for new queries
- The initialization of QueryVision and the saving of queries is conducted in XML format
- A metalinguistic creation of complex query constructs which is done by different user groups is possible

## Features

In modern organizations software life cycle is very short. Today you are trying to release a version and tomorrow you will get your first changerequest. But the way of this changes to the next release often takes a long time.

QueryVision reduces this way to build new dynamic queries for instance in **Kampagnenmanagement** with easy techniques.

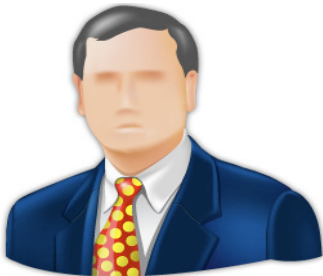
## User Groups

### *Final users*



**Final users** can work with QueryVision to comfortably define attributes for a dynamic creation of queries (selections). The tool encapsulates all SQL features such as subqueries or unions. **Change requests for dynamic queries are provided simply and quickly** due to the abilities of the query designer to edit presentation elements of query forms and to quickly add further features without changing the code. The user is given enough space to develop his own creative ideas.

### *Managers*



The basic component suite enables query composers and requirement managers to create a new query by combining with each other any query components that have already been defined and provided by the developer. New query features including plausibilities are to be added via drag&drop and the presentation form of the entry elements is exchangeable. By saving the query components in XML format, they can immediately be made available to any final user.

**Thanks to QueryVision, there is no planning or development time required to answer final user requests.**

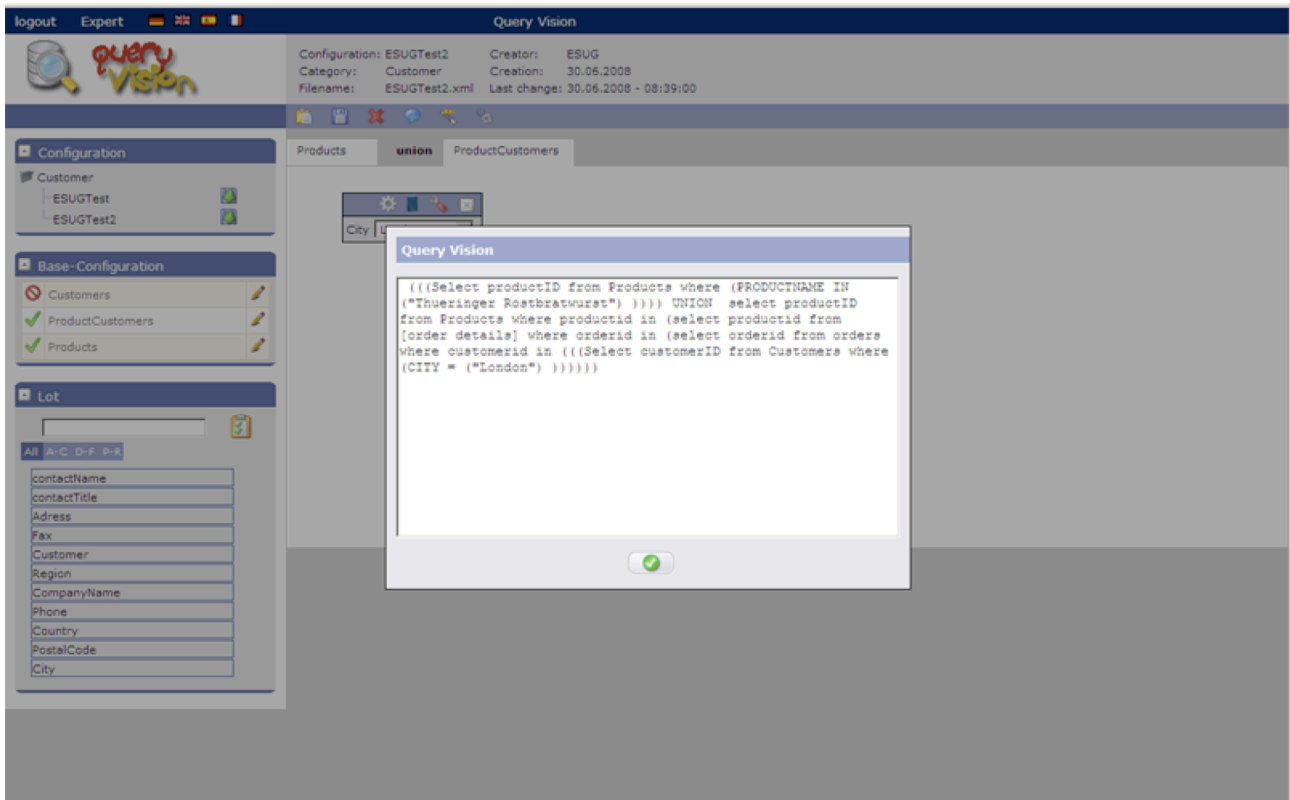
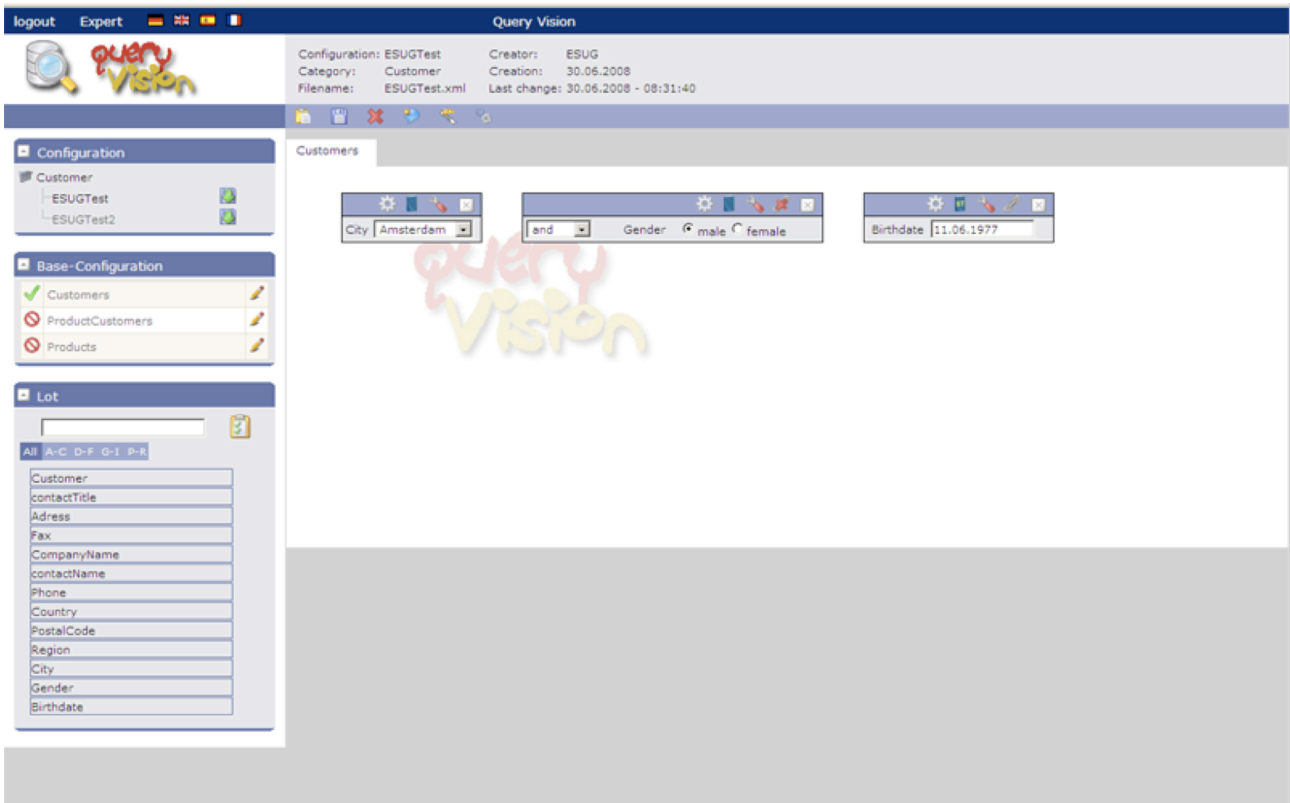
### *Developers*



With QueryVision, **developers** can very easily create or adapt user interfaces for dynamic queries and query forms. The **context-dependent** supply of **query components** for parts of any database is provided by a defined XML interface. The interface allows to define SQL instructions per QueryPattern and to additionally provide entry fields with value margins for dynamic queries without changing the code. All query patterns can be combined with each other and complex query conditions can be added via script code. Since final user queries are saved in XML, user queries are transparent

and analyses are simplified.

Two screenshots:



## **Architecture**

QueryVision lets you build UI for generating dynamic queries like in a composition editor and build new QueryParts. You can view these parts like things in **Model-View-Controller** architecture in inspectors. To compose these parts to new more complex parts, with elements of sql-language is very simple.

## **QueryParts(Configurations)**

QueryParts consists of a querydefinition (one or more QueryPatterns) and a "query user interface". Every element of this UI is capable for one attribute in a query model. Predefined HTML-Elements are available (e.g. combobox, entryfield, ...). These elements allow to specify rules for validation, the visualisation or methods for "complex querytransforming support".

## **XML Specification**

QueryVision uses parts to render every attribute in the user interfaces. The developer has to define possible elements in a query pattern for every base component and finally store this information as XML specification. A query designer or final user can feed his QueryVision with this XML-Specifications and start his query design process. To finish this process every user can store his "application model" in the QueryVision application model or even an external storage medium.

## **Advantages**

QueryVision lets you create queries with highly dynamic creation of Web-based forms via drag&drop like with a composition editor. Your web browser gives a live feedback!

That makes the development process for developing dynamic queries easy. Final users can make these changes without changing code. Change requests are no longer the work of developers. With QueryVision this is the work of final users or a "query designer".

## **Enhancements for future**

### ***QueryEditor***

A graphical viewer for an existing database (like Access) will be enhanced, so you can have a graphical picture of the model.

### ***Display panel***

A display panel will be enhanced, so you can "make a picture of your new query" with a database of your choice.